

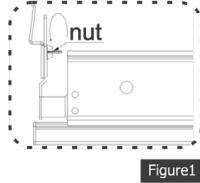
ATTB

INSTALLATION

2019-03-15

WARNING ! Installation should be performed by a qualified electrician in accordance with the National and Local Electrical Code.

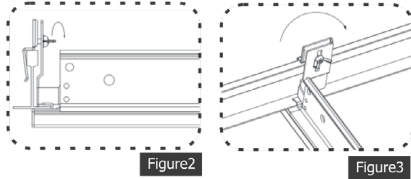
1. Unpack and check the luminaire and accessories.
 Wear work gloves to keep the light clean, avoiding any oil or dirt transferred to it.



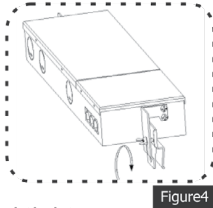
2. Turn off the main power.

3. Unlock the two nuts at the ends of the linear light (Figure 1).

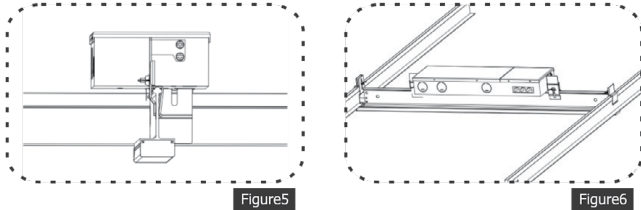
4. Install the linear light to ceiling grid and tighten the two terminal nuts. (Figure 2 and Figure 3)



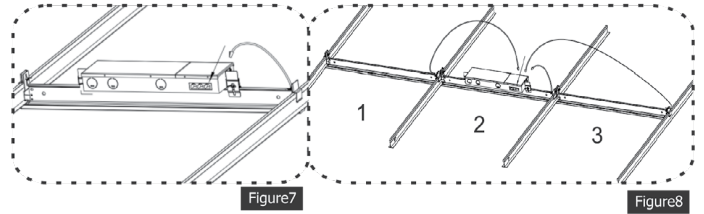
5. Unlock the nuts from both end of Junction Box. (Figure 4)



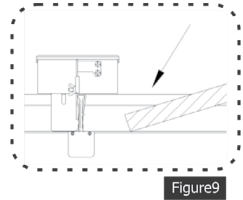
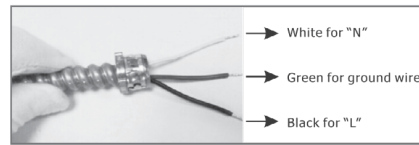
6. Secure the junction box to the linear light and tighten the two terminal nuts. (Figure 5 and Figure 6)



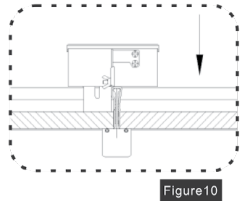
7. Connect the connector (RJ45) from LED lighting unit to the output connector of Junction Box. (Figure 7)
 Please note one driver can only support max 3 units. (Figure 8)



8. Open the Junction Box, connect the L (Live), N (Neutral), G (Ground) wires by using the 4-pin connectors and connect the dimming wire with the orange connector cap.



9. Cover the plasterboard to finish installation and ensure there is no opening at ceiling. (Figure 8 and Figure 9)



Wiring Diagram

