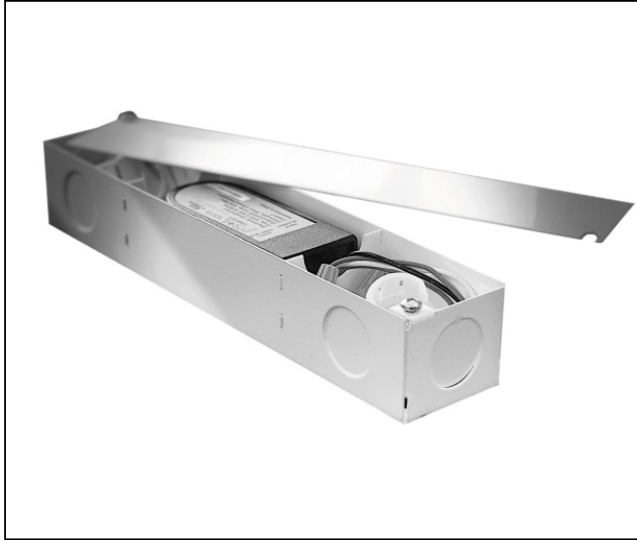


WUC-HWB-24V60WD



TECHNICAL DATA:

- Output: 24V
- Connected Load: 60W
- Electrical Input: 120V
- Dimming range 10% - 100%
- Dimming Method: LV ELV
- Dimensions 5 1/2" L x 2 1/4" W x 1 1/2" D
- Finish: White

Leviton: VPE04-1L, VPE06-1L, ATE04-1L, ATE06-1L, ACE05-1L

DIMENSIONS

